

# 141 Red-legged Partridge

Put your logo here



Red-legged Partridge. Male (10-X).

## RED-LEGGED PARTRIDGE (*Alectoris*)

### IDENTIFICATION

33-38 cm. **Adult** brown reddish upperparts; grey breast, reddish on belly; black streaked neck; chestnut, black and white streaks on flanks; bill, ocular ring and legs red. **Juvenile** brown, without barred flanks; neck without black streaked; bill brownish.



Red-legged Partridge. Pattern of head: top adult; bottom juvenile.

### SIMILAR SPECIES

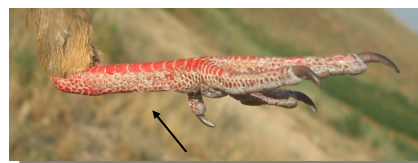
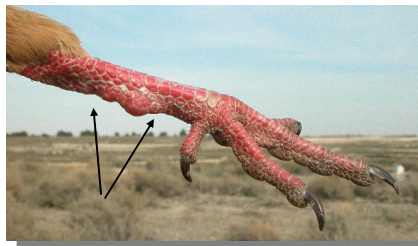
This species is unmistakable.

### SEXING

**Male** with broad and glossy black neck; spurs in both legs rounded and with width at base similar to four scales; width of tarsus at spur level wider than 8,6 mm; wing longer than 166 mm. **Female** with small and dull black neck; without spurs, with spur in only one leg or in both legs (pointed or rounded), with width at base less than four scales; width of tarsus at spur level narrower than 8,4 mm; wing shorter than 162 mm. **Juveniles** can be sexed since 3 months old when spurs start to grow on **males**.



Red-legged Partridge. Sexing. Pattern of head: top male; bottom female.



Red-legged Partridge. Sexing. Width of spur: top male; middle and bottom female.

# 141 Red-legged Partridge

Put your logo here

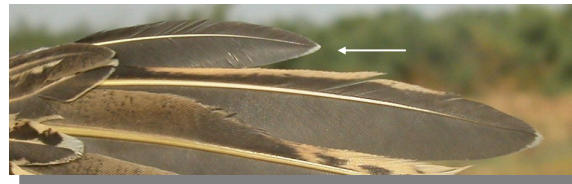
## AGEING

3 age groups can be recognized:

**Juvenile** with brown upperparts; underparts buff without barred flanks; throat white without black edge; outer primaries with pale tips; brown bill; dull reddish legs.

**1st year autumn/2nd year spring** similar to **adults** but with the two outermost primaries retained which are discolored and have a pale spot at the tip (**CAUTION:** the pale tip on the outer primaries in **postjuvenile** birds can be very small or be absent due to wear; check differences of colour between retained **juvenile** primaries, paler and worn, and darker changed ones).

**Adult** without moult limits on the wing; with the two outermost primaries without pale tips.



Red-legged Partridge. Ageing. Pattern of the white spot on tips of the outermost primaries: top adult; middle 1st/2nd year; bottom juvenile.



Red-legged Partridge. Ageing. Pattern of breast: left adult; right juvenile.

## MOULT

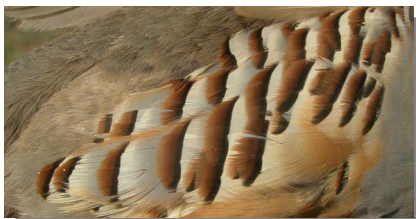
Complete **postbreeding** moult, usually finished in November. Partial **postjuvenile** moult including all feathers except the two outermost primaries, which are retained; finished early November.

## PHENOLOGY

I	II	III	IV	V	VI	VII	VIII	IX	X	XI	XII

## STATUS IN ARAGON

Resident. Widely distributed throughout the Region, absent only from some areas of the Pyrenees.



Red-legged Partridge. Ageing. Pattern of flank: top adult; bottom juvenile.



Red-legged Partridge. Female (11-VII)

# 141 Red-legged Partridge

Put your logo here



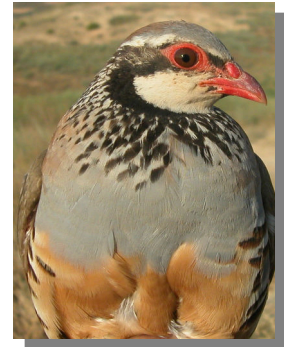
Red-legged Partridge. Juvenile (05-VIII)



Red-legged Partridge. Head pattern: top juvenile (05-VIII); bottom young (26-VII).



Red-legged Partridge. Young (26-VII)



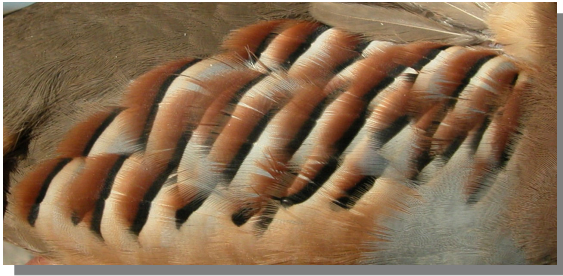
Red-legged Partridge. Head pattern: top male (10-X); bottom female (11-VII)



Red-legged Partridge. Breast pattern: top left male (10-X); top right female (11-VII); left juvenile (05-VIII); bottom young (26-VII).

# 141 Red-legged Partridge

Put your logo here



Red-legged Partridge. Male: flank pattern (10-X)



Red-legged Partridge. Female: flank pattern (11-VII)



Red-legged Partridge. Juvenile: flank pattern (05-VIII)



Red-legged Partridge. Young: flank pattern (26-VII)



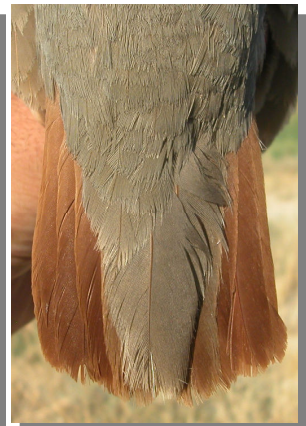
Red-legged Partridge. Juvenile. Leg pattern (08-VIII).



Red-legged Partridge. Male. Pattern of leg and spur (09-X).



Red-legged Partridge. Female. Leg pattern: top without spur (11-VII); bottom with spur (09-X).



Red-legged Partridge. Tail pattern: male (02-I); right female (11-VII).



Red-legged Partridge. Tail pattern: left juvenile (05-VIII); right young (26-VII).

# 141 Red-legged Partridge

Put your logo here



Red-legged Partridge. Adult: pattern of the outermost primaries (11-VII).



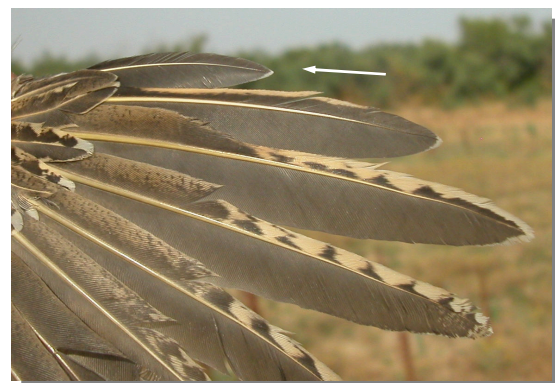
Red-legged Partridge. Upperpart pattern: top left male (10-X); top right female (11-VII); left juvenile (05-VIII); bottom young (26-VII).



Red-legged Partridge. 1st year: pattern of the outermost primaries with fresh tips (09-X).



Red-legged Partridge. 1st year: pattern of the outermost primaries with worn tips (05-XI).



Red-legged Partridge. Juvenile: pattern of the outermost primaries (05-VIII).

# 141 Red-legged Partridge

Put your logo here



Red-legged Partridge. Young: pattern of the outermost primaries (26-VII).



Red-legged Partridge. Young: pattern of wing (26-VII).



Red-legged Partridge. Adult: pattern of wing (11-VII).



Red-legged Partridge. 1st year: pattern of wing (09-X).



Red-legged Partridge. Juvenile: pattern of wing (05-VIII).